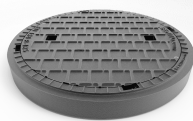


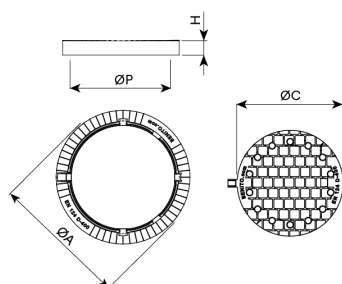
[T2069D4](#)



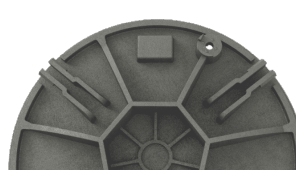
[T2069GM](#)

Maco D4 is designed to support soft traffic. It is perfect for installing on roads with an ADT of 1.000-20.000, particularly road carriageways (including pedestrian streets), stabilised hard shoulders and parking areas for all manner of vehicles.

- Made from spheroidal graphite ductile cast iron, according to ISO 1083 (Type 500-7) and standard EN 1563.
- Compliant with the European standard UNE EN-124.
- Ball and socket joint to guarantee easy opening and safety in operation.
- Elástico1 closure system.
- Maximum aperture angle of 115°.
- Sound-proof joint included.
- Surface with 14 ventilation holes.
- Metal non-slip surface.
- Coated with non-toxic, non-flammable and non-polluting water-soluble black paint.
- **Elástico2 closure system.**



| REF. | | ØA | H | ØC | ØP | UN. |
|---------|------|-----|-----|-----|-----|-----|
| T2069D4 | D400 | 785 | 100 | 650 | 606 | 10 |



[Project sheet](#) | [CAD](#) | [HD image](#)