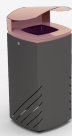




65L



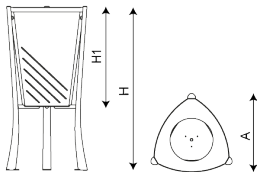
**Mielek SR**  
PA691SR



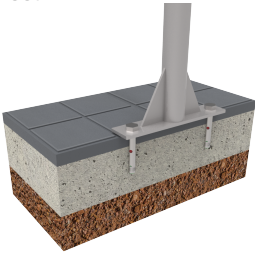
**MINSK-R**  
UM327R



Inner bin and structure made of zinc-plated painted steel. Inner bin with hinged ring to fix the bag. Ductile iron feet.



Ref.	A	H	H1
PA612	450	900	550



Epoxy primer and polyester powder coating, feet and bucket in burgundy color. Feet with double anti-corrosion treatment, oven-baked paint. Recommended anchoring: triangular anchoring base with holes for its fixing in the floor by means of three M8 screws, not furnished.



V. 2024-03-19 | The constant improvement and evolution of our products may result in some modifications of the technical specifications and characteristics of the products without prior notice.