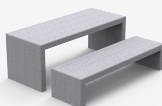




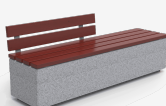
Dalia
H314



Kube
UM372M



Kube Plus
UM372LP



Taulat
A27A



The stadium of Al Wakrah can host up to 40,000 people. It was designed by the British-Iraqi architect Zaha Hadid and it is located 15km at the South of Doha.

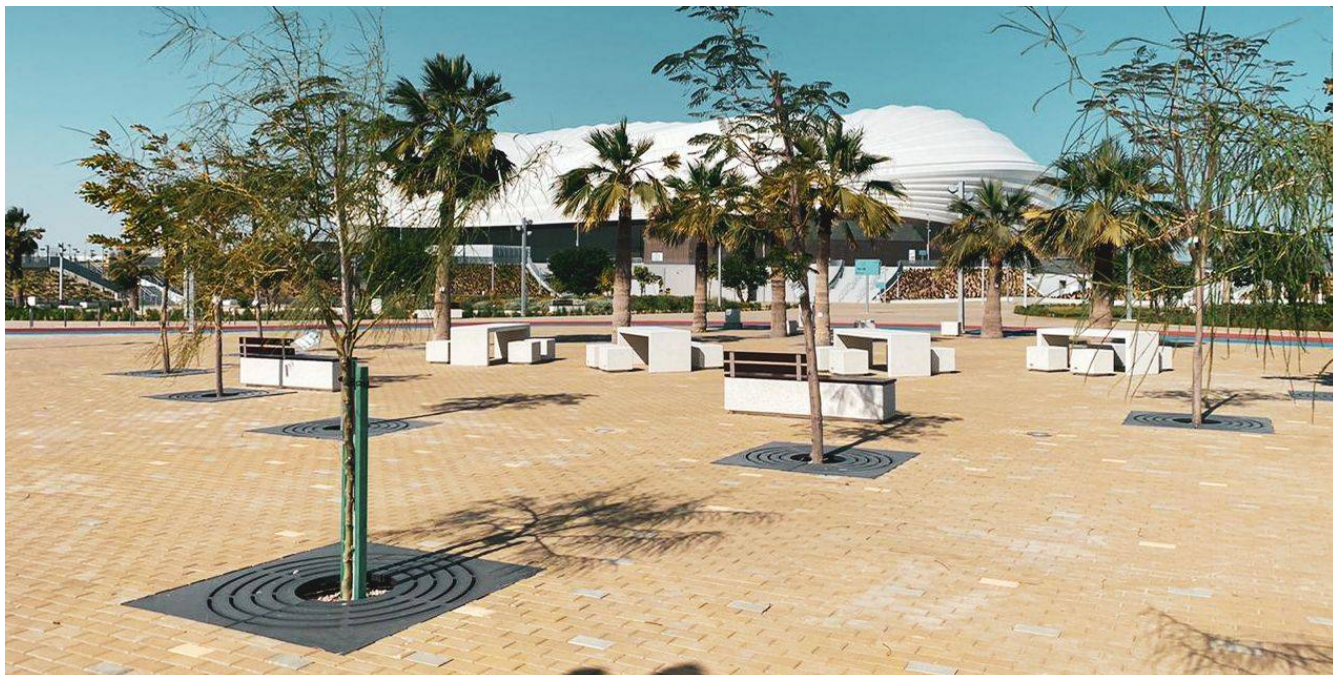
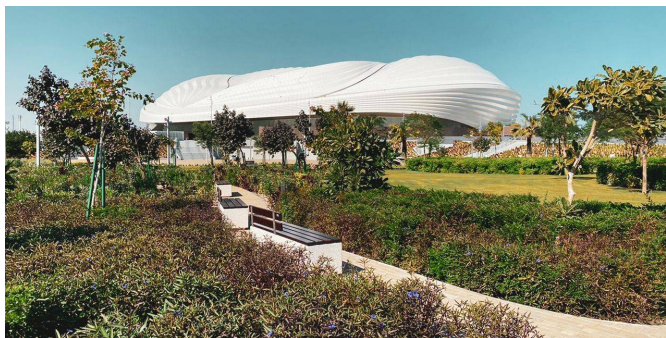
This city is known for its commercial port as well as for being the entry to the state capital.

“An extraordinary stadium for an adventurous city.”

Modern, futuristic and functional, it is still loyal to the Qatari tradition. It integrates cultural references according to the weather conditions and functional requirements.

BENITO urban furniture has been installed outside the stadium. The selected option was the **KUBE Collection** – benches (UM372), chairs (UM372S), bins (PA672) and tables (UM372M), with straight and balanced lines, designed to embellish the area by giving it a contemporary style. They have a robust structure made of precast textured granite grey concrete, which guarantees a comfortable sitting experience even when temperatures get really high during summer.

Dalia bollards (H251) and several types of tree grates were also installed near the stadium.



The constant improvement and evolution of our products may result in some modifications of the technical specifications and characteristics of the products without prior notice.