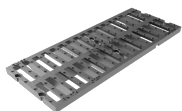
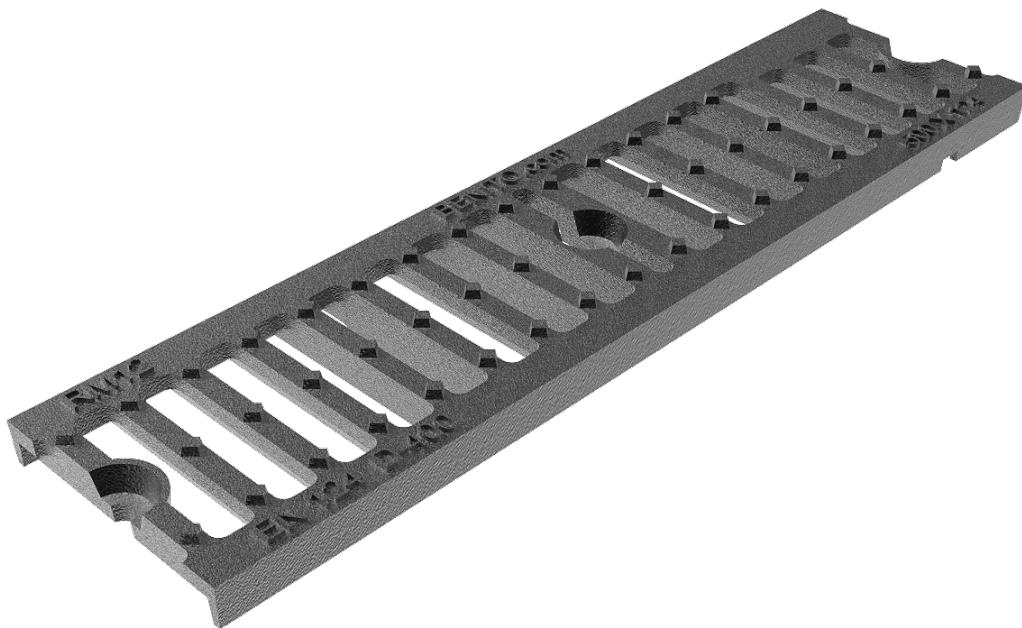




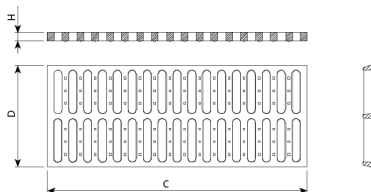
RMD joint system between grilles



RMD joint system between grilles



RM30



Mecalinea D4 is designed to support medium traffic. It is perfect for installing on roads with an ADT of 1.000-20.000, particularly road carriageways (including pedestrian streets), stabilised hard shoulders and parking areas for all manner of vehicles.

- Made from spheroidal graphite ductile cast iron, according to ISO 1083 (Type 500-7) and standard EN 1563.
- Compliant with the European standard UNE EN-124.
- Chain device closure.
- Metal non-slip surface.
- Coated with non-toxic, non-flammable and non-polluting water-soluble black paint.
- RMD joint system between grilles (optional).

REF.	C	D	H	dm2	UN.
RM12D4	495	124	20	3	200
RM20D4	750	200	27	7	100
RM30D4	750	300	27	10	30

[Project sheet](#) | [CAD](#) | [Catalogue](#) | [HD image](#)