

# Street Workout

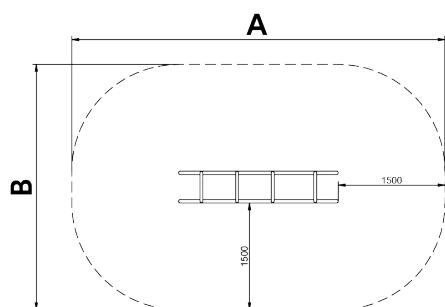
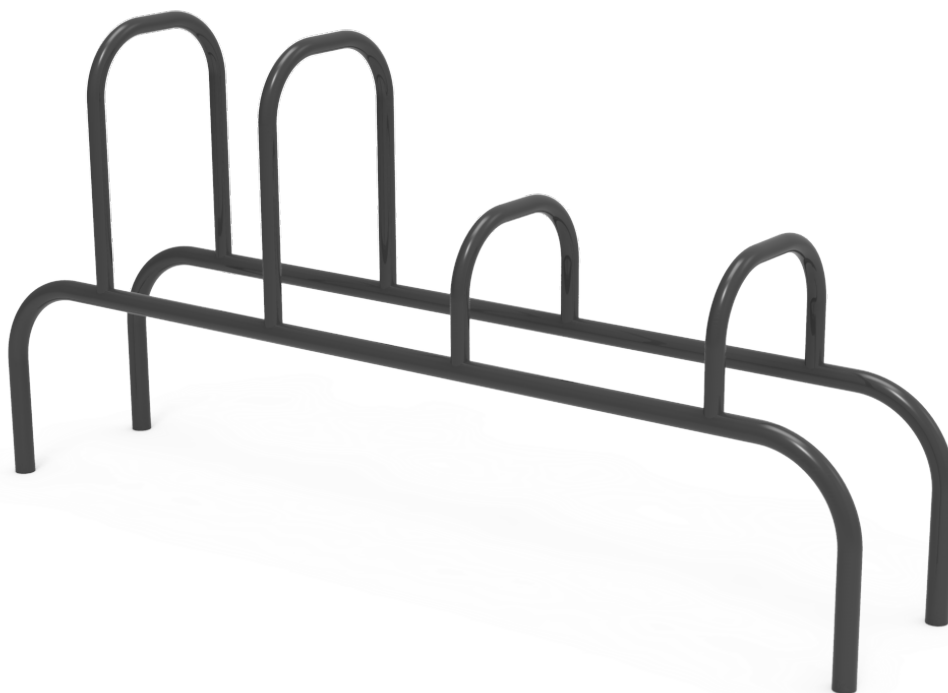
## Pommel Horse

JSW09

14+



Certified  
**EN16630**  
product



**Street Workout** elements made of metallic materials with circular profile posts and painted aluminum flanges to guarantee professional performance and product adaptability. Composed by a wide range of combinable equipment such as Wall Bars, Parallel Bars, Monkey, Snake, Abdominal, Pull-ups, Push-ups and Double level. Sports practice consists of using public outdoor spaces for free aerobic, cardiovascular, strength, muscle and/or flexibility personal training.



A=5250mm



17m2



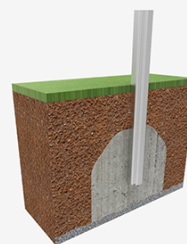
1.00m



1

B=3450mm

SB



[Maintenance guide](#) | [Project sheet](#) | [CAD](#) | [Certificate](#) | [Mounting instructions](#) | [HD image](#)

## Materials:

**Bars, Metal:** Ø40x3mm galvanised steel bars lacquered with polyester powder coating.

**Clamps, Metal:** Cast aluminum clamps. Finished with green polyester powder coating.

**Screws:** Electro galvanised and stainless steel 8.8 DIN267, AISI-304 screws.

- None of the materials requires a specific treatment for its disposal.
- If the product is subject to severe use, maintenance should be increased.
- Don't use the product before the installation/maintenance is ready.
- Please check the maintenance instructions.

Biggest part (mm): / Heaviest part (kg):

## Minimum information required in the signs according to EN16630:2015 standard

In the **FITNESS AREA**, there must be an information sign (pictogram, graphic symbol) including the following information:

- Equipment for young or adult users measuring more than 1.40m
  - Read and follow the instructions contained in the signs
  - Before using the equipment, users need to take into account their own aptitudes from a medical point of view
  - Excessive efforts must be avoided while using the equipment
  - Emergency telephone number
  - System or method to contact with the maintenance staff (telephone, email, web)
  - Address or GPS location of the playground area
  - Instructions on the exercises with the corresponding pictograms
- Main functions of the equipment

**IMPACT ZONE:** security area and ground coverings according to the EN1176-1:2017 standard.

Spare parts availability: 10 years.

Ground anchoring screws not included.

## Playful features:

