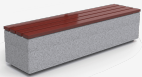


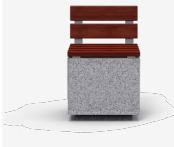
Kube benches and chairs made with concrete and natural tropical wood boards installed in several parts of the municipality for neighbours to have a meeting place.



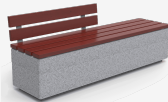
Kube Mad
UM372LM



Kube P
UM372SLP



Kube Plus
UM372LP



The goal of the project was to create **a unique space with a lot of personality, accessible and integrated in the urban environment**; a vast green and pedestrian area designed for the citizens. This was achieved by installing urban furniture which, thanks to its arrangement, is an invitation to rest and socialise, made with modern elements, simple lines, and an efficient and sustainable high-quality material.

For this project, the **Kube collection** was chosen. It is made with precast textured granite grey concrete, with natural tropical wood boards that guarantee a comfortable sit.



The constant improvement and evolution of our products may result in some modifications of the technical specifications and characteristics of the products without prior notice.